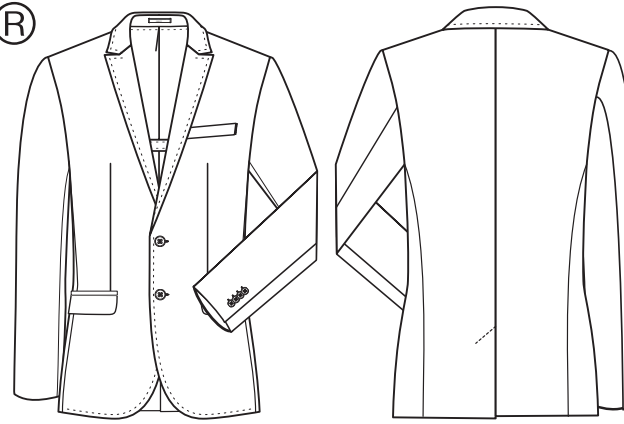


MODERN WITH 37.5[®]

Slim Fit



STYLE 1127



GERMAN

HERREN-SAKKO

- Slim Fit
- 2-Knopf
- Spitzfacon
- 2 Pattentaschen
- 1 Brustleistentasche
- 3 Innentaschen
- AMF-Handstich
- Rückenschlitz
- Halbgefüttert
- Rückenlänge 73 cm | Gr. 50
- **GRÖSSEN:** 42-54, 90-106

NR: 1127.2810.010 PINPOINT SCHWARZ
NR: 1127.2810.020 PINPOINT MARINE
NR: 1127.2820.010 SCHWARZ
NR: 1127.2820.014 HELLGRAU
NR: 1127.2820.021 DUNKELBLAU

ENGLISH

MEN'S JACKET

- slim fit
- 2-button
- peaked lapel
- 2 flap pockets
- 1 breast welt pocket
- 3 inside pockets
- AMF hand stitch
- back vent
- half lined
- back length 73 cm | size 50
- **SIZES:** 42-54, 90-106

NO: 1127.2810.010 PINPOINT BLACK
NO: 1127.2810.020 PINPOINT NAVY BLUE
NO: 1127.2820.010 BLACK
NO: 1127.2820.014 LIGHT GREY
NO: 1127.2820.021 DARK BLUE

FRENCH

VESTON HOMME

- Slim fit
- 2 boutons
- Revers à pointe
- 2 poches à rabat
- 1 poche poitrine
- 3 poches intérieures
- Point à la main AMF
- Fente de dos
- Semi-doublure
- Longueur dos 73 cm | taille 50
- **TAILLES :** 42-54, 90-106

RÉF : 1127.2810.010 PINPOINT NOIR
RÉF : 1127.2810.020 PINPOINT BLEU MARINE
RÉF : 1127.2820.010 NOIR
RÉF : 1127.2820.014 GRIS CLAIR
RÉF : 1127.2820.021 BLEU FONCÉ

DUTCH

HEREN COLBERT

- slim fit
- 2 knoops
- puntig revers
- 2 klepzakken
- 1 borstzakje
- 3 binnenzakken
- AMF-stitching
- rugsplit
- half gevoerd
- ruglengte 73 cm | maat 50
- **MAAT:** 42-54, 90-106

NR: 1127.2810.010 PINPOINT ZWART
NR: 1127.2810.020 PINPOINT MARINE
NR: 1127.2820.010 ZWART
NR: 1127.2820.014 LICHTGRIJS
NR: 1127.2820.021 DONKERBLAUW

GEWEBE: 52% Polyester, 46% Schurwolle, 2% Elasthan, 190 g/m²
FUTTER: 100% Polyester

PFLERGE:



FABRIC: 52% polyester, 46% virgin wool, 2% elastane, 190 g/m²
LINING: 100% polyester

CARE:



TEXTILE : 52 % polyester, 46 % laine vierge, 2 % élasthanne, 190 g/m²
DOUBLURE : 100 % polyester

ENTRETIEN :



DOEK: 52% polyester, 46% scheerwol, 2% elastaan, 190 g/m²
BINNENVOERING: 100% polyester

ONDERHOUD:

